

## **Notification of Street Closure**

**TO:** All Agencies Concerned  
**FROM:** City of Ormond Beach, Engineering Division  
**DATE:** December 2, 2013  
**RE:** **Road Closure on Division Avenue**

Division Avenue from Old Kings Road to west of Center Street will be closed from December 2, 2013 until approximately January 31, 2014. The City will be constructing drainage improvements. Please use designated detours. If you have any questions regarding this closure, please contact the City of Ormond Beach Engineering Department at 386-676-3269.

Thank You

### **NOTIFICATION LIST**

	<u>Phone</u>	<u>Fax</u>
EVAC Ambulance Service	386-252-4911	386-254-5110
Ormond Beach City Hall	386-677-0311	386-676-3384
Ormond Beach Fire Admin.	386-676-3255	386-676-3564
Ormond Beach Police Dispatch	386-676-3508	386-676-3554
Ormond Beach Public Works	386-676-3220	386-676-3294
Ormond Beach Post Office	386-676-0693	386-676-9208
Volusia County School Trans.	386-239-6360	386-239-6374
VOTRAN	386-756-7496	386-756-7487
Fed-Ex	386-274-2500	386-274-4741

#### **For County or State Roads, please also notify:**




Volusia County Public Works	386-239-6535	386-239-6529
Volusia County Emergency Mgt.	386-254-1500	386-248-1742
Volusia County Fire Services	386-254-4657	386-822-5025
Florida Highway Patrol Dispatch	407-737-2200	407-737-2217

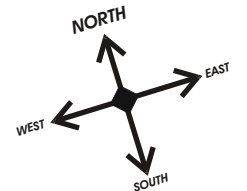
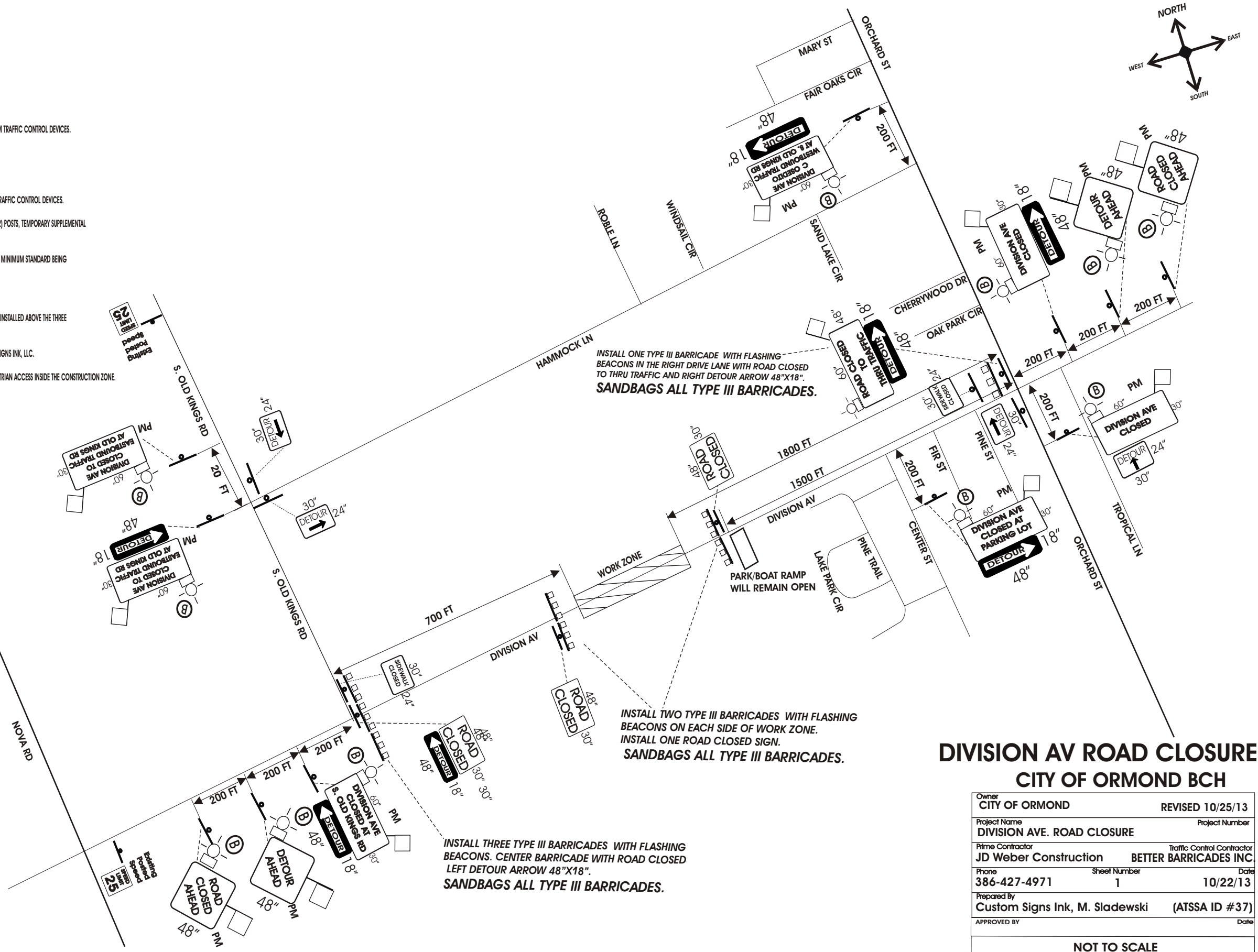
# CONTRACTOR

IT IS UNDERSTOOD AND AGREED THAT THE CONTRACTOR DEPLOYING THE MAINTENANCE OF TRAFFIC PLAN HEREIN SET OUT IS GRANTED TO THE EXTENT OF THE CITY'S RIGHT, TITLE AND INTEREST, IF ANY IN THE LAND TO BE ENTERED UPON AND USED BY THE CONTRACTOR, AND THE CONTRACTOR WILL AT ALL TIMES, ASSUME ANY AND ALL RISK OF AND INDEMNIFY, DEFEND, AND SAVE HARMLESS THE CITY FROM AND AGAINST ANY AND ALL LOSSES, DAMAGES, COSTS AND EXPENSES ARISING IN ANY MANNER WHATSOEVER ON ACCOUNT OF IN ANY WAY RESULTING FROM THE ACTS OR OMISSIONS OF THE CONTRACTOR OR ITS OFFICERS, EMPLOYEES OR AGENTS IN IMPLEMENTING AND MAINTAINING THIS MAINTENANCE OF TRAFFIC PLAN. THE CONTRACTOR AGREES THAT ITS ASSUMPTION OF RISKS AND OBLIGATIONS TO INDEMNIFY THE CITY RELATED TO CONTRACTOR ACTIVITY.

1. ALL SIGNS AND BARRICADES SHALL BE FABRICATED AND INSTALLED IN ACCORDANCE WITH THE MOST RECENT MANUAL ON UNIFORM TRAFFIC CONTROL DEVICES.
2. THE POSTED SPEED LIMIT THROUGH THE WORK ZONE SHALL BE SHOWN ON DRAWINGS.
3. ALL SIGNS SHALL BE INSTALLED FOR ADVANCE VIEWING (NO LIMBS OR OTHER OBJECTS BLOCKING VIEW).
4. CAUTION SHALL BE EXERCISED IN SIGN PLACEMENT TO AVOID BLOCKING SIGHT DISTANCE AT INTERSECTIONS OR OTHER EXISTING TRAFFIC CONTROL DEVICES.
5. ALL SIGNS SHALL BE POST MOUNTED UNLESS OTHERWISE NOTED AND ALL SIGNS 48" WIDE AND ABOVE SHALL BE MOUNTED ON TWO(2) POSTS, TEMPORARY SUPPLEMENTAL SIGNAGE WILL BE USED FOR SHORT-TERM WORK PERIODS, 24 HOURS OR LESS.
6. WHEN REPLACING TEXT OR USING PLATES TO COVER TEXT ON SIGNS, ALL NEW TEXT ON THAT SIGN SHALL BE THE SAME SIZE AND THE MINIMUM STANDARD BEING THE EXISTING TEXT.
7. FLASHING BEACONS, AND FLAGS AT 45 DEGREES AS SHOWN ON DRAWING.
8. ONLY IN EXTREME CASES WILL SIGNS BE MOUNTED ON TYPE III BARRICADES. ALL SIGNS MOUNTED ON TYPE III BARRICADES SHALL BE INSTALLED ABOVE THE THREE REFLECTIVE RAILS. THESE RAILS SHALL NOT BE BLOCKED.
9. NO CHANGES SHALL BE MADE TO THIS TRAFFIC CONTROL PLAN WITHOUT PRIOR CONSENT OF THE CITY OF ORMOND OR CUSTOM SIGNS INK, LLC.
10. CONTRACTOR WILL BE RESPONSIBLE FOR ADEQUATELY BARRICADING ALL AREAS DEEMED HAZARDOUS FOR VEHICULAR AND PEDESTRIAN ACCESS INSIDE THE CONSTRUCTION ZONE.
11. LOCAL RESIDENTS AND EMERGENCY RESPONSE VEHICLES WILL BE PERMITTED ACCESS AT ALL TIMES.
12. ANTICIPATED 60 DAY DURATION.
13. INDEX 660 (PEDESTRIAN TRAFFIC).
14. ANTICIPATED WORK HOURS-MON.-FRI./7AM-5PM.

## LEGEND

-  = TYPE III BARRICADE
-  = TYPE "B" HI INTENSITY FLASHER
-  = SIGN
- PM** = POST MOUNTED SIGN



## DIVISION AV ROAD CLOSURE CITY OF ORMOND BCH

Owner <b>CITY OF ORMOND</b>	REVISED 10/25/13
Project Name <b>DIVISION AVE. ROAD CLOSURE</b>	Project Number
Prime Contractor <b>JD Weber Construction</b>	Traffic Control Contractor <b>BETTER BARRICADES INC</b>
Phone <b>386-427-4971</b>	Sheet Number <b>1</b>
Prepared By <b>Custom Signs Ink, M. Sladewski</b>	Date <b>10/22/13</b>
APPROVED BY	(ATSSA ID #37)
<b>NOT TO SCALE</b>	

Maintenance of Traffic (MOT) Plans are copyright protected. Custom Sign Ink, designer and implementer, provides this plan for general reference and "typical" application/ meeting standard approval requirements. Use for purposes other than intended, is strictly prohibited.