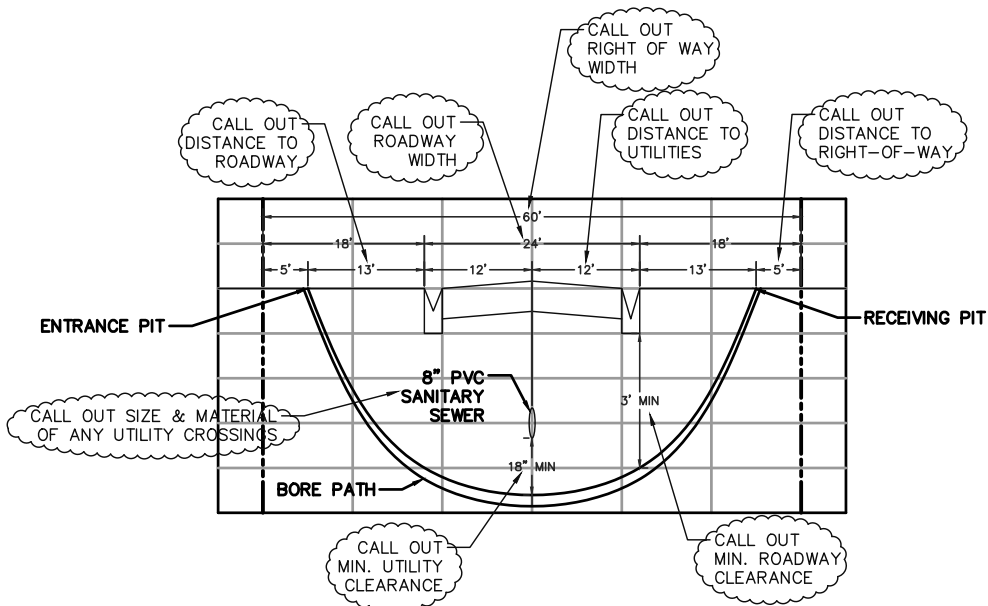


TYPICAL DIRECTIONAL DRILL PLAN



TYPICAL DIRECTIONAL DRILL PROFILE

NOTES:

1. MAXIMUM BACK REAMER SIZE = 6" CALL OUT BACK REAM SIZE
2. BORE PATH = 50' +/- CALL OUT BORE LENGTH
3. USE CONDUIT - 4" HDPE DR11 CALL OUT SIZE, MATERIAL, & PRESSURE RATING
4. TRACING WIRE TO BE ADHERED TO DIRECTIONAL BORE
5. MINIMUM COVER SHALL BE 4.0' ON ALL CITY STREETS
6. CONTRACTOR SHALL OBTAIN CLEARANCE FROM THE CITY OF ORMOND BEACH ENGINEERING DIVISION PRIOR TO PERFORMING THE DIRECTIONAL BORE

TYPICAL DIRECTIONAL DRILL NOTES



STANDARD CONSTRUCTION DETAIL
 TYPICAL PLAN, PROFILE, & NOTES FOR
 HORIZONTAL DIRECTIONAL DRILL

INDEX

DD-3

MAY 2020