

**IMPORTANT NOTE:** SIDEWALK IN VICINITY OF TREE GRATES TO BE WARPED DOWN AS NECESSARY TO FACILITATE GRATE BEING INSTALLED HORIZONTALLY. SLOPE NOT TO EXCEED 1:10 GRADIENT.

REMAINING THREE SIDES OF GRATE SUPPORTS TO BE 1 1/2"x 1 1/2" HOT DIPPED GALVANIZED CHANNEL IRON OF SUFFICIENT LENGTH TO FIT TIGHTLY AT CORNERS. OUTSIDE DIMENSIONS OF SUPPORTS WHEN FINISHED TO BE 4'x 4'.

CONCRETE HOLLAND STONE  
COLOR MIX III, 2 3/8" THICK  
x 4"x 7 7/8"

4'x4' SQUARE TREE GRATE HALF SECTION  
AS MANUFACTURED BY:

NEENAH FOUNDRY COMPANY  
BOX 729, 2121 BROOKS AVE.  
NEENAH, WISCONSIN 54957  
(414) 725-7000 (OR EQUAL)

3" RECESSED CONCRETE SHELF

AFTER FITTING SHIMS IF NECESSARY TO PROVIDE LEVEL BASE FOR GRATE, INSTALL TWO 2"x 1/4" EXPANSION BOLTS PER SIDE. (SEE DETAIL BELOW)

SEE SHEET SC-15 FOR SECTIONS "A-A" AND "B-B"

EXISTING SOIL

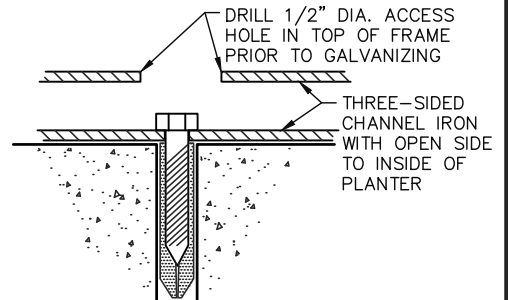
EXISTING HIGH BACK CURB

USE 2"x 1/4" EXPANSION BOLTS HERE

SEE SHEET SC-15 FOR SECTIONS "A-A" AND "B-B"

GRATE SUPPORT AGAINST CURB TO BE 1 1/2"x 1 1/2" HOT DIPPED GALVANIZED ANGLE IRON BOLTED TO CURB IN TWO PLACES. BOLT LEVEL WITH TOP OF CURB AND 1 1/2" BELOW HIGHEST POINT OF CURB.

**NOTE:**  
ALL HOLES IN GRATE SUPPORTS TO BE DRILLED PRIOR TO GALVANIZING!  
ALL GRATE SUPPORT BRACKETS TO BE 1/8" MIN. THICKNESS.



**STANDARD CONSTRUCTION DETAIL**  
**CROSSWALK PAVER DETAIL W/TREE GRATE**  
**(PLAN VIEW)**

NTS

INDEX

SC-13A

MAY 2020