



# RETAIL MARKET PROFILE

## ORMOND BEACH, FLORIDA

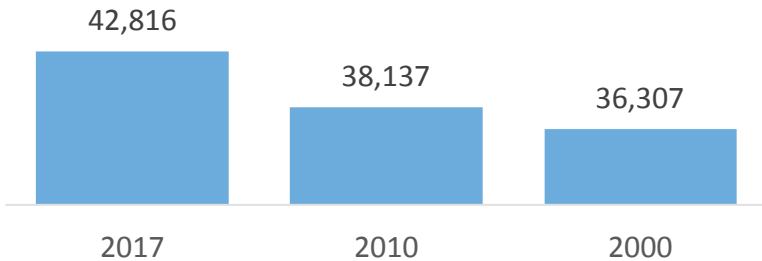


Ormond Beach is known as Central Florida's Preferred Business Address for its remarkable quality of life and its healthy business climate.

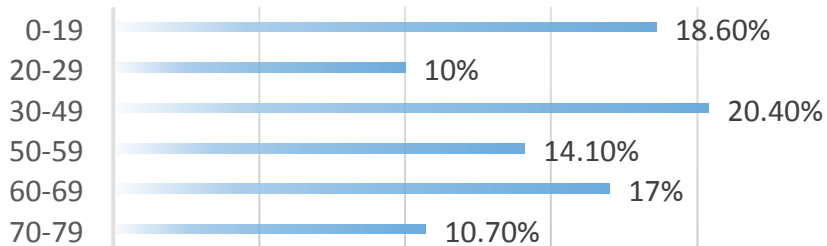
Ormond Beach is located on Central Florida's magnificent east coast, at the crossroads of Central Florida's High Tech Corridor. A small town with big city flair and old-fashioned comfort the City is strategically located near Daytona Beach, Metro Orlando and Jacksonville.

The Ormond Beach Economic Development Team is proactive in promoting sustainable Economic growth. We can help with site selection, market research and data, economic incentives, business connections and networking.

### POPULATION



### AGE GROUPS



Avg. HH Income  
\$72,653



Median HH Income  
\$48,978



High School  
28.7%



Some College  
24%



Associates  
10%



Bachelor's & Higher  
31.2%

# OPPORTUNITY SITES

## ORMOND BEACH, FLORIDA



### 880 S. Atlantic Avenue

Location

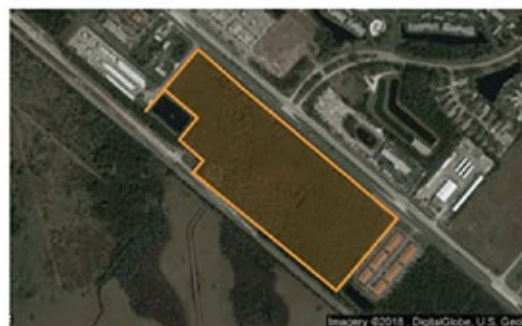
**Ormond Beach, FL**

Development Opportunity

**Mixed Use, Retail, and Hotel**

Site Size

**2.21 Acres**



### Ormond Crossing Retail Site

Location

**Ormond Beach, FL**

Development Opportunity

**Mixed Use and Retail**

Site Size

**24.11 Acres**



### US 40 & N. Tymber Creek Road

Location

**Ormond Beach, FL**

Development Opportunity

**Mixed Use, Retail, Office, and Hotel**

Site Size

**23.1 Acres**



### 251 S. Atlantic Avenue/A1A

Location

**Ormond Beach, FL**

Development Opportunity

**Mixed Use, Retail, and Hotel**

Site Size

**2.19 Acres**

## CONTACT INFORMATION

Brian Rademacher, CECD  
Director Economic Development  
City of Ormond Beach  
22 S. Beach Street  
Ormond Beach, FL 32174

Phone: 386-676-3266

E-Mail: [brian.rademacher@ormondbeach.org](mailto:brian.rademacher@ormondbeach.org)

Web: [www.ormondbeach.org](http://www.ormondbeach.org)